

TAHITI Trousse

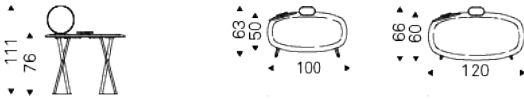


Product description

Dressing desk with base in titanium (GFM11) or bronze (GFM18) embossed lacquered steel. Top with rounded edges (U) in Canaletto walnut (NC) or burned oak (RB). Accessory tray and mirror with frame in titanium (GFM11) or bronze (GFM18) embossed lacquered steel.

TAHITI Trousse

Dimension



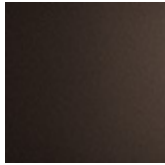
TAHITI Trousse

Finishes: frame

metal



GFM11 titanium
embossed



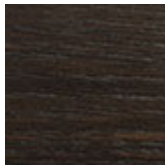
GFM18 bronze
embossed

Finishes: top

wood



NC walnut
canaletto



RB burned oak